

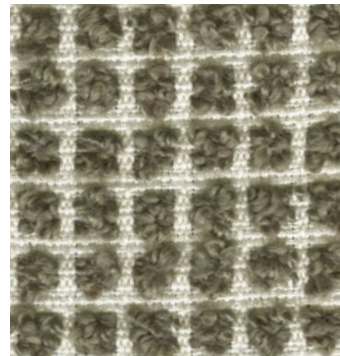
/  
**Nuance Collection**  
Price Category **Top**



**BRIONNE 385 012**  
18% CO - 31% PL - 26% WO - 22% PC - 3% PA  
GR / ML 740  
MARTINDALE 40.000



**CAMELIA 447 1001**  
48% CO - 15% PL - 37% VI  
GR / ML 800  
MARTINDALE 25.000



**BRIONNE 385 015**  
18% CO - 31% PL - 26% WO - 22% PC - 3% PA  
GR / ML 740  
MARTINDALE 40.000



**JASMIN 401 001**  
70% WO - 25% NY - 5% AF  
GR / ML 516  
MARTINDALE 100.000



**CAMELIA 447 1008**  
48% CO - 15% PL - 37% VI  
GR / ML 800  
MARTINDALE 25.000



**MAGNOLIA 442 002**  
40% CO - 15% PC - 25% PL - 10% VI - 10% WO  
GR / ML 960  
MARTINDALE 30.000



**DAMA L1522 01**  
50% CO - 50% MD  
GR / ML 620  
MARTINDALE 50.000



**DAMA L1522 28**  
50% CO - 50% MD  
GR / ML 620  
MARTINDALE 50.000



/  
**Nuance Collection**  
Price Category **Top**



**JASMIN 401033**  
70% WO - 25% NY - 5% AF  
GR / ML 516  
MARTINDALE 100.000



**JASMIN 401034**  
70% WO - 25% NY - 5% AF  
GR / ML 516  
MARTINDALE 100.000



**KLEE L1613 01**  
35% PC - 28% PL - 22% WO - 15% CO  
GR / ML 660  
MARTINDALE 25.000



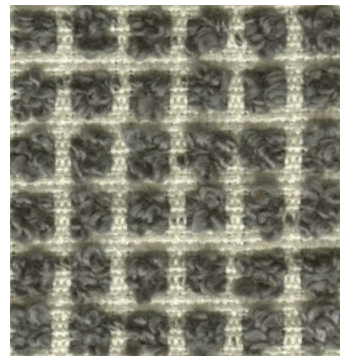
**MAGNOLIA 442 004**  
40% CO - 15% PC - 25% PL - 10% VI - 10% WO  
GR / ML 960  
MARTINDALE 30.000



**MAGNOLIA 442 014**  
40% CO - 15% PC - 25% PL - 10% VI - 10% WO  
GR / ML 960  
MARTINDALE 30.000



**SABLE PL689 011**  
35% CO - 25% VI - 15% LI - 25% PL  
GR / ML 865  
MARTINDALE 50.000



**BRIONNE 385 016**  
18% CO - 31% PL - 26% WO - 22% PC - 3% PA  
GR / ML 740  
MARTINDALE 40.000



**CAMELIA 447 015**  
48% CO - 15% PL - 37% VI  
GR / ML 800  
MARTINDALE 25.000



/  
**Nuance Collection**  
Price Category **Top**



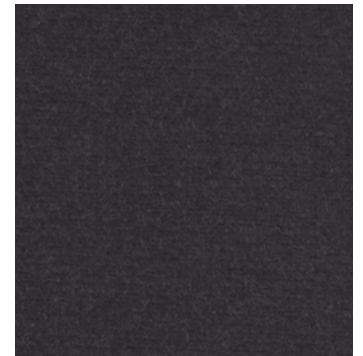
**CAMELIA 447 1016**  
48% CO - 15% PL - 37% VI  
GR / ML 800  
MARTINDALE 25.000



**DAMA L1522 05**  
50% CO - 50% MD  
GR / ML 620  
MARTINDALE 50.000



**DAMA L1522 20**  
50% CO - 50% MD  
GR / ML 620  
MARTINDALE 50.000



**DAMA L1522 31**  
50% CO - 50% MD  
GR / ML 620  
MARTINDALE 50.000



**JASMIN 401 008**  
70% WO - 25% NY - 5% AF  
GR / ML 516  
MARTINDALE 100.000



**JASMIN 401 010**  
70% WO - 25% NY - 5% AF  
GR / ML 516  
MARTINDALE 100.000



**KLEE L1613 02**  
35% PC - 28% PL - 22% WO - 15% CO  
GR / ML 660  
MARTINDALE 25.000



**KLEE L1613 04**  
35% PC - 28% PL - 22% WO - 15% CO  
GR / ML 660  
MARTINDALE 25.000



/  
**Nuance Collection**  
Price Category **Top**



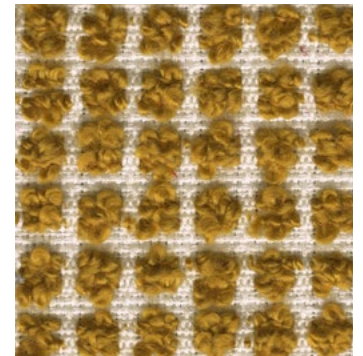
**MAGNOLIA 442 012**  
40% CO - 15% PC - 25% PL - 10% VI - 10% WO  
GR / ML 960  
MARTINDALE 30.000



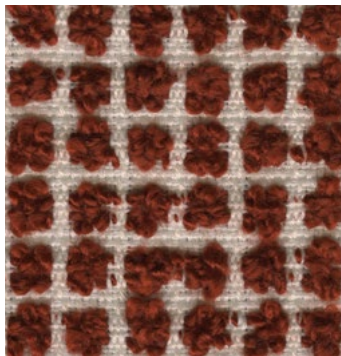
**MAGNOLIA 442 013**  
40% CO - 15% PC - 25% PL - 10% VI - 10% WO  
GR / ML 960  
MARTINDALE 30.000



**SABLE PL689 036**  
35% CO - 25% VI - 15% LI - 25% PL  
GR / ML 865  
MARTINDALE 50.000



**BRIONNE 385 011**  
18% CO - 31% PL - 26% WO - 22% PC - 3% PA  
GR / ML 740  
MARTINDALE 40.000



**BRIONNE 385 102**  
18% CO - 31% PL - 26% WO - 22% PC - 3% PA  
GR / ML 740  
MARTINDALE 40.000



**CAMELIA 447 135**  
48% CO - 15% PL - 37% VI  
GR / ML 800  
MARTINDALE 25.000



**DAMA L1522 09**  
50% CO - 50% MD  
GR / ML 620  
MARTINDALE 50.000



**DAMA L1522 12**  
50% CO - 50% MD  
GR / ML 620  
MARTINDALE 50.000



/  
**Nuance Collection**  
Price Category **Top**



**DAMA L1522 13**  
50% CO - 50% MD  
GR / ML 620  
MARTINDALE 50.000



**DAMA L1522 18**  
50% CO - 50% MD  
GR / ML 620  
MARTINDALE 50.000



**JASMIN 401 024**  
70% WO - 25% NY - 5% AF  
GR / ML 516  
MARTINDALE 100.000



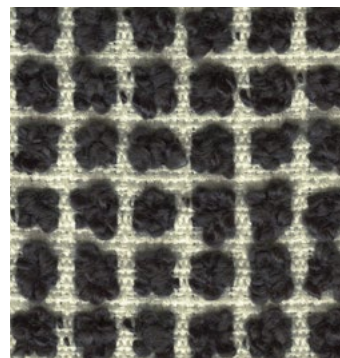
**JASMIN 401 025**  
70% WO - 25% NY - 5% AF  
GR / ML 516  
MARTINDALE 100.000



**JASMIN 401 029**  
70% WO - 25% NY - 5% AF  
GR / ML 516  
MARTINDALE 100.000



**SABLE PL689 007**  
35% CO - 25% VI - 15% LI - 25% PL  
GR / ML 865  
MARTINDALE 50.000



**BRIONNE 385 017**  
18% CO - 31% PL - 26% WO - 22% PC - 3% PA  
GR / ML 740  
MARTINDALE 40.000



**DAMA L1522 10**  
50% CO - 50% MD  
GR / ML 620  
MARTINDALE 50.000



/  
**Nuance Collection**  
Price Category **Top**



**DAMA L1522 19**  
50% CO - 50% MD  
GR / ML 620  
MARTINDALE 50.000



**DAMA L1522 24**  
50% CO - 50% MD  
GR / ML 620  
MARTINDALE 50.000



**DAMA L1522 25**  
50% CO - 50% MD  
GR / ML 620  
MARTINDALE 50.000



**DAMA L1522 26**  
50% CO - 50% MD  
GR / ML 620  
MARTINDALE 50.000



**JASMIN 401 012**  
70% WO - 25% NY - 5% AF  
GR / ML 516  
MARTINDALE 100.000



**SABLE PL689 017**  
35% CO - 25% VI - 15% LI - 25% PL  
GR / ML 865  
MARTINDALE 50.000

